

EsFlow Plus Injectable

Light-Cured Flowable Composite Resin



EsFlow Plus **Injectable**
Light-Cured Flowable Composite Resin



Line up



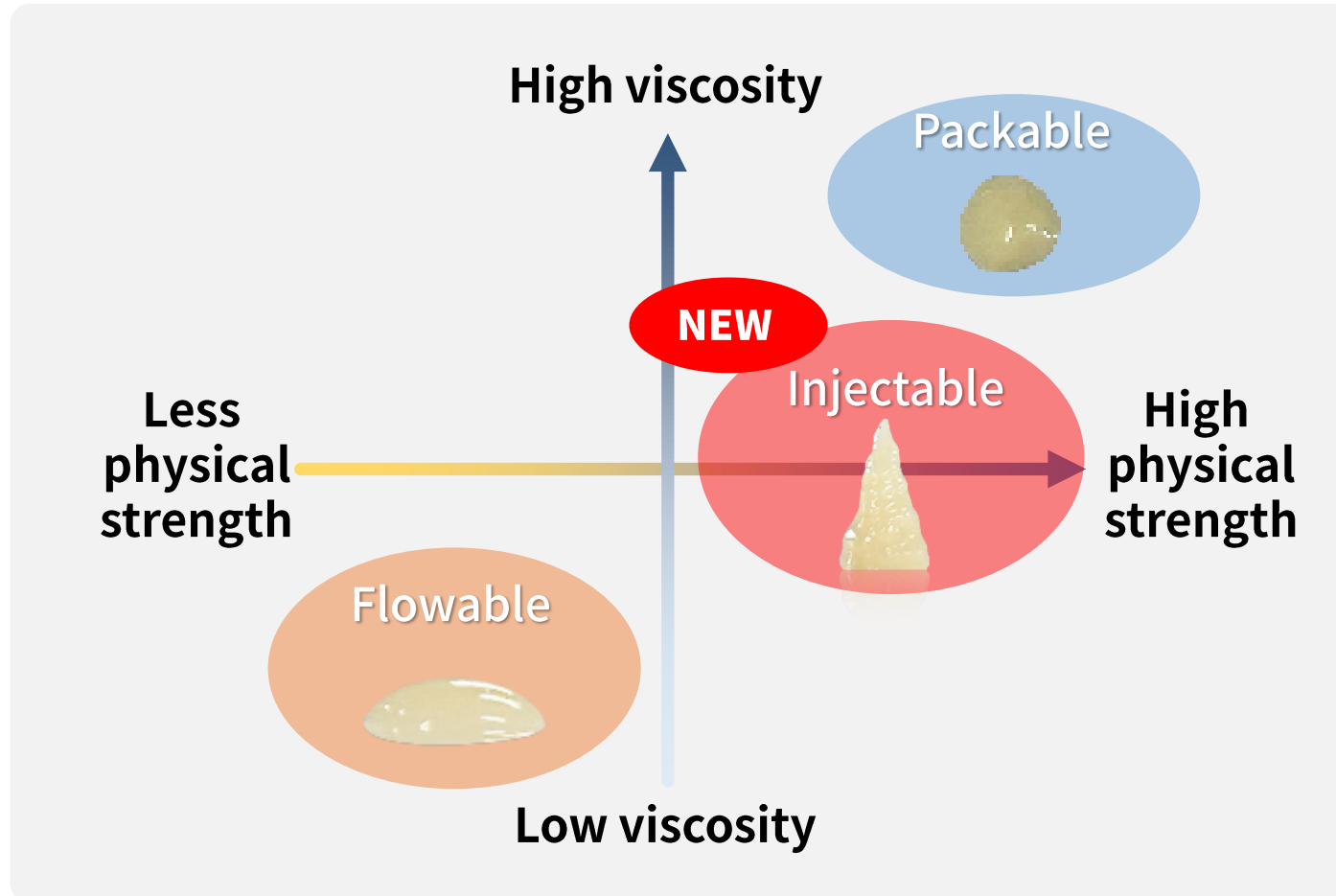
EsFlow Plus
Injectable
(Gold Plunger)

EsFlow Plus
(Gray Plunger)

EsFlow Plus
Bulkfill
(Blue Plunger)

EsFlow Plus
Core it LC
(Black Plunger)

What is injectable flowable?



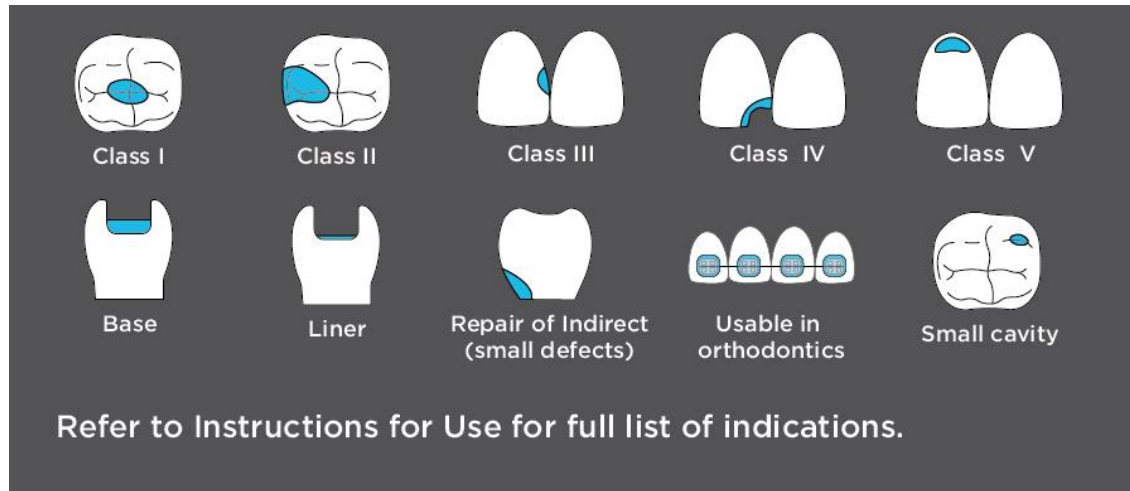
- Traditional composite in an injecting syringe
- Flowable yet strong
Even stronger than leading packable composite in the market
- Suitable for any cavity class without covering layer

EsFlow Plus Injectable

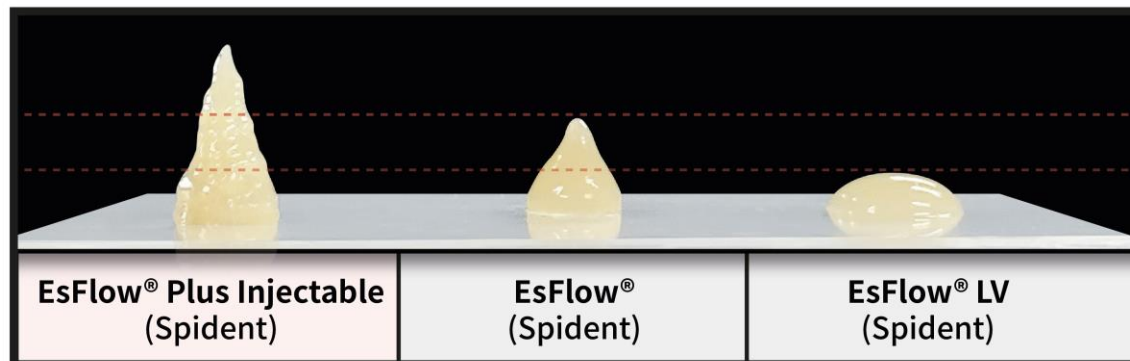
Light-Cured Flowable Composite Resin



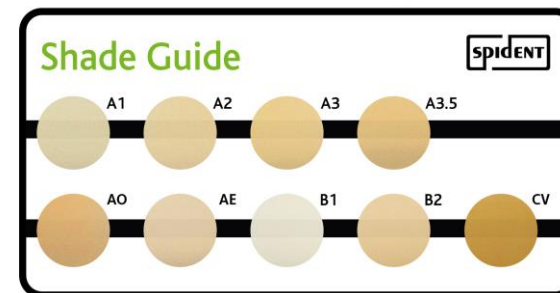
Indication



- Class I – V restoration
- Base Liner
- Undercutting filling
- Repair of composite or ceramic restoration
- Usable in orthodontics



EsFlow[®] PLUS+ Injectable



*Spident R&D center internal data.

EsFlow Plus **Injectable**

Light-Cured Flowable Composite Resin



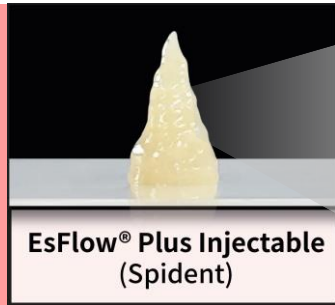
Advantage

- Exceptional physical strength
- Strong enough to replace a conventional composite
- Thixotropic
- Excellent gloss retention
- No stringing
- Easy extrusion

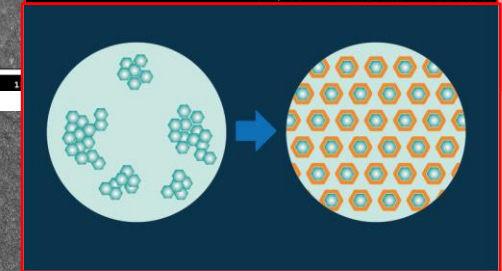
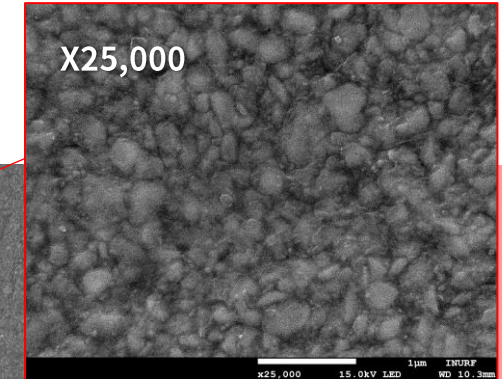
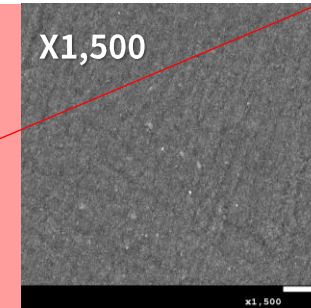
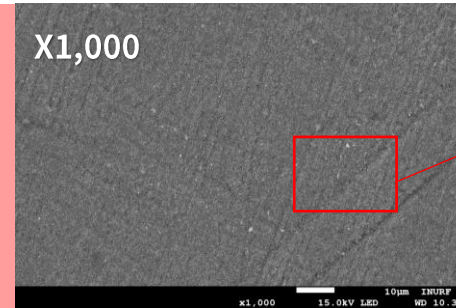
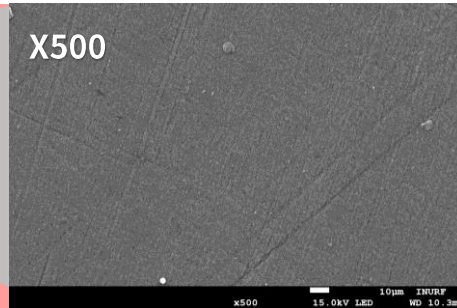
EsFlow Plus Injectable
Light-Cured Flowable Composite Resin



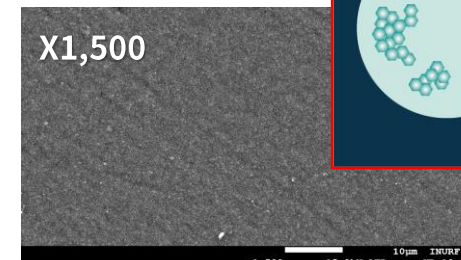
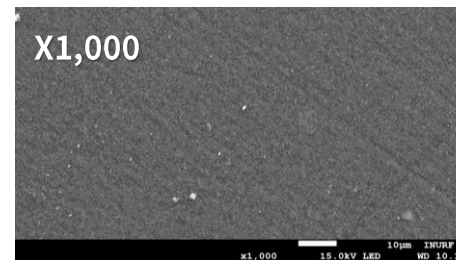
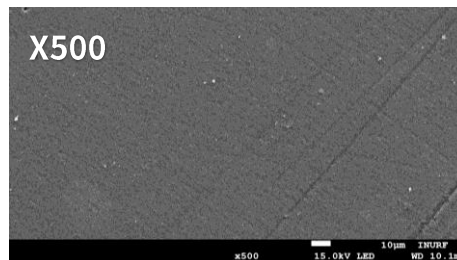
EsFlow Plus Injectable Nano Technology



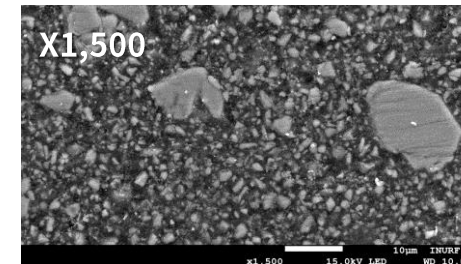
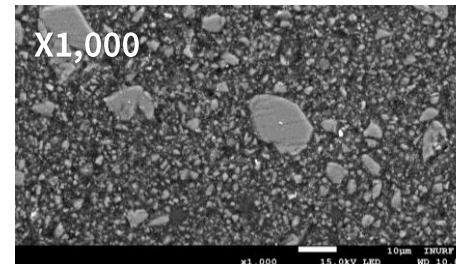
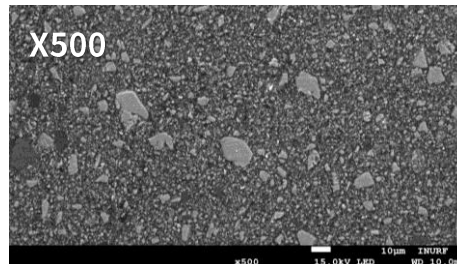
EsFlow® Plus Injectable
(Spident)



G-aenial
Universal
Injectable
(GC)



Beautiful
Injectable
(SHOFU)



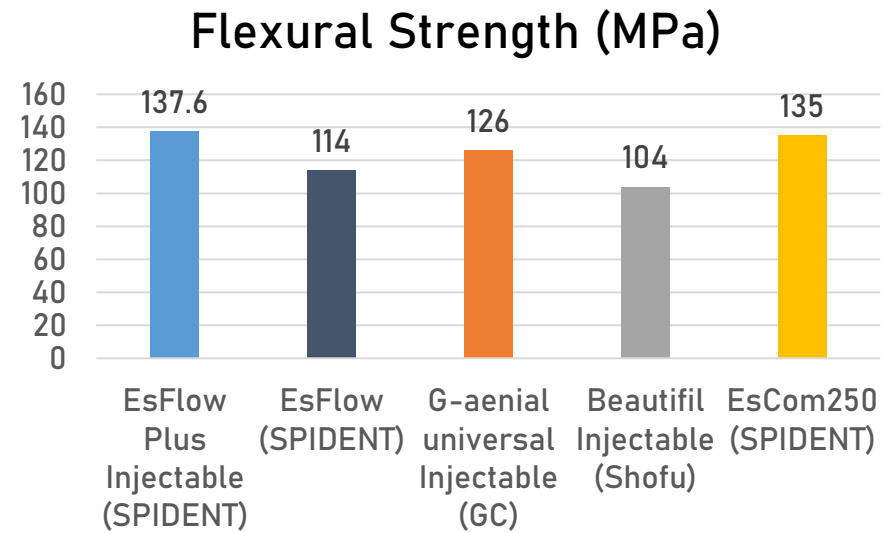
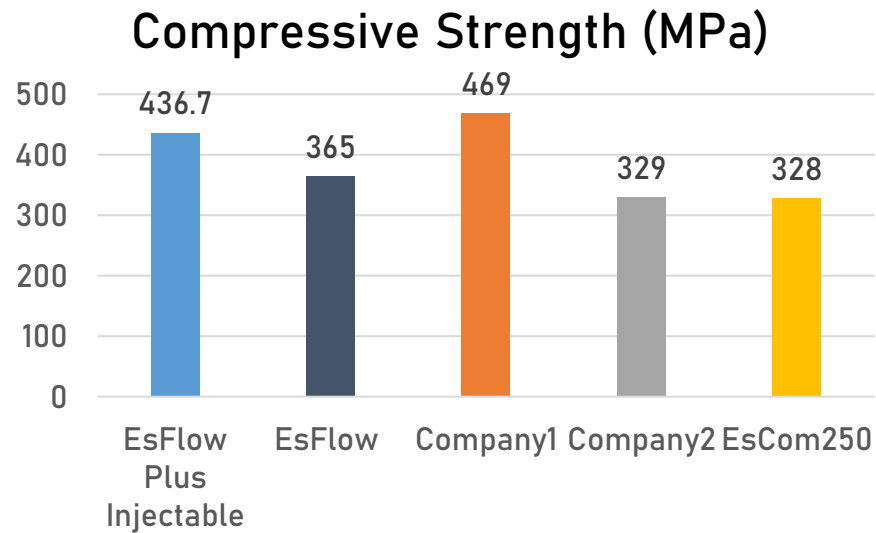
Our unique silane coating technology facilitates the uniform and dense dispersion of nano fillers(180nm), culminating in exceptional strength and optimal handling characteristics.

EsFlow Plus Injectable

Light-Cured Flowable Composite Resin



Exceptional physical strength



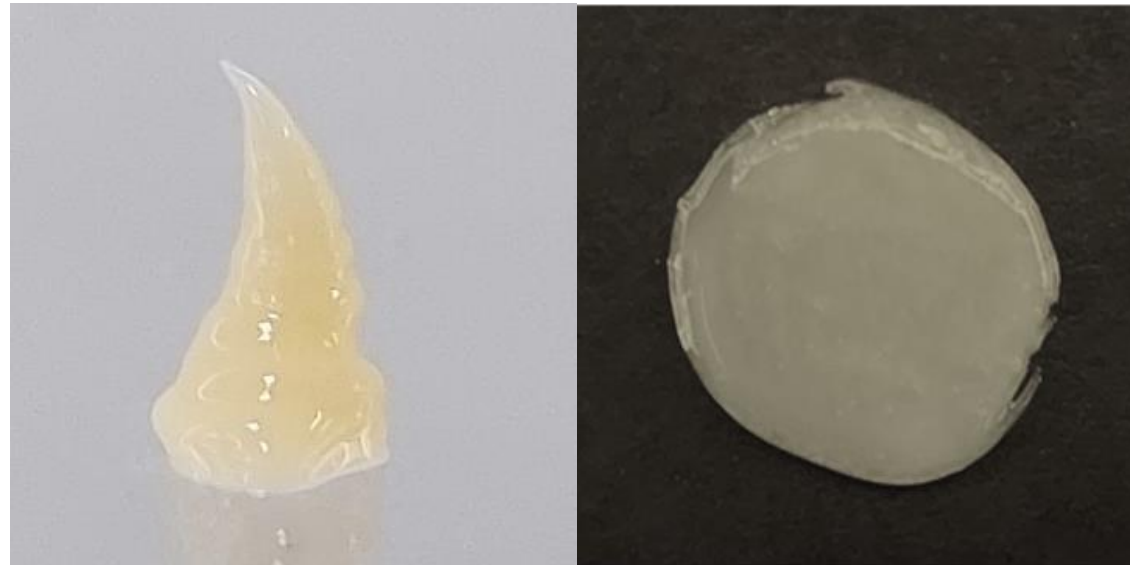
Strong enough to replace a conventional composite

*Source: SPIDENT R&D Center

EsFlow Plus **Injectable**
Light-Cured Flowable Composite Resin



Thixotropic



Stack as you like, Flow as you need

Exceptional thixotropic viscosity makes it optimal
for free-hand cusps build-up

Gloss retention

Excellent polishability and gloss retention



EsFlow Plus
Injectable
(SPIDENT)



EsFlow Plus
Injectable
(SPIDENT)

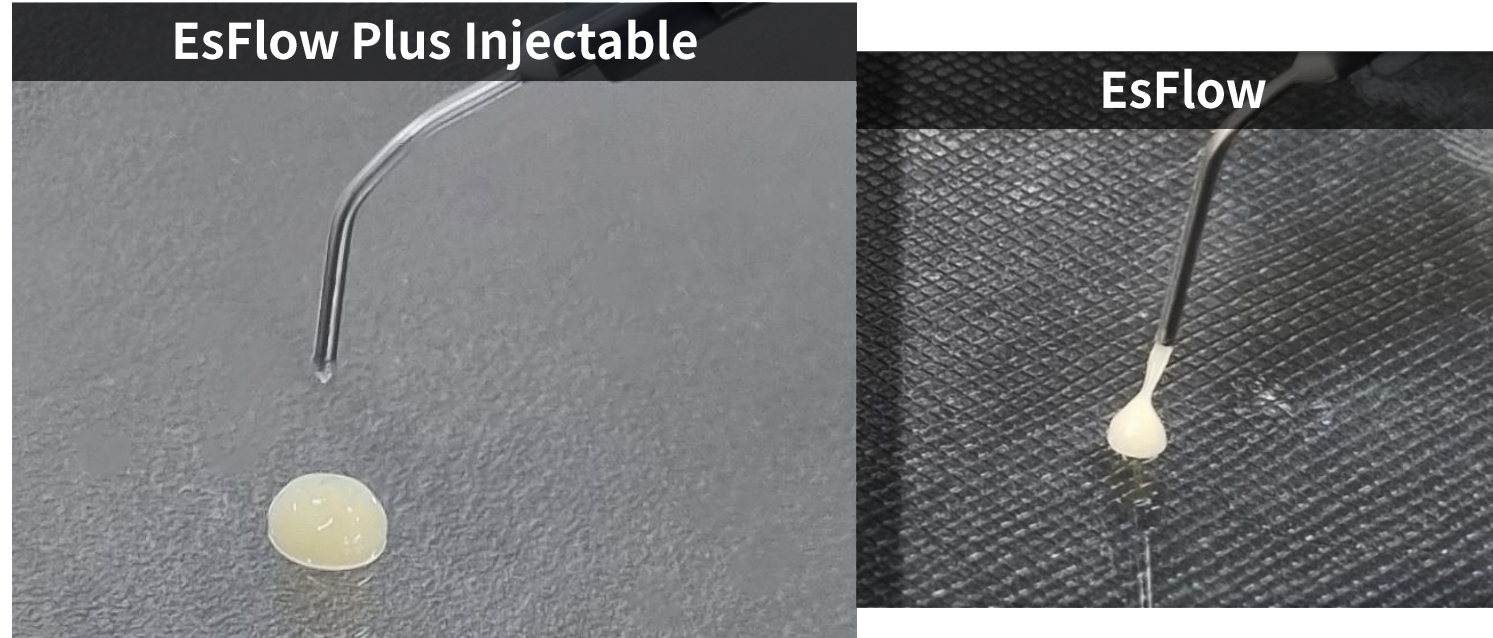
G-aenial
universal
Injectable
(GC)

Beautifil
Injectable
(Shofu)

EsFlow Plus **Injectable**
Light-Cured Flowable Composite Resin



No stringing



Shape while inject

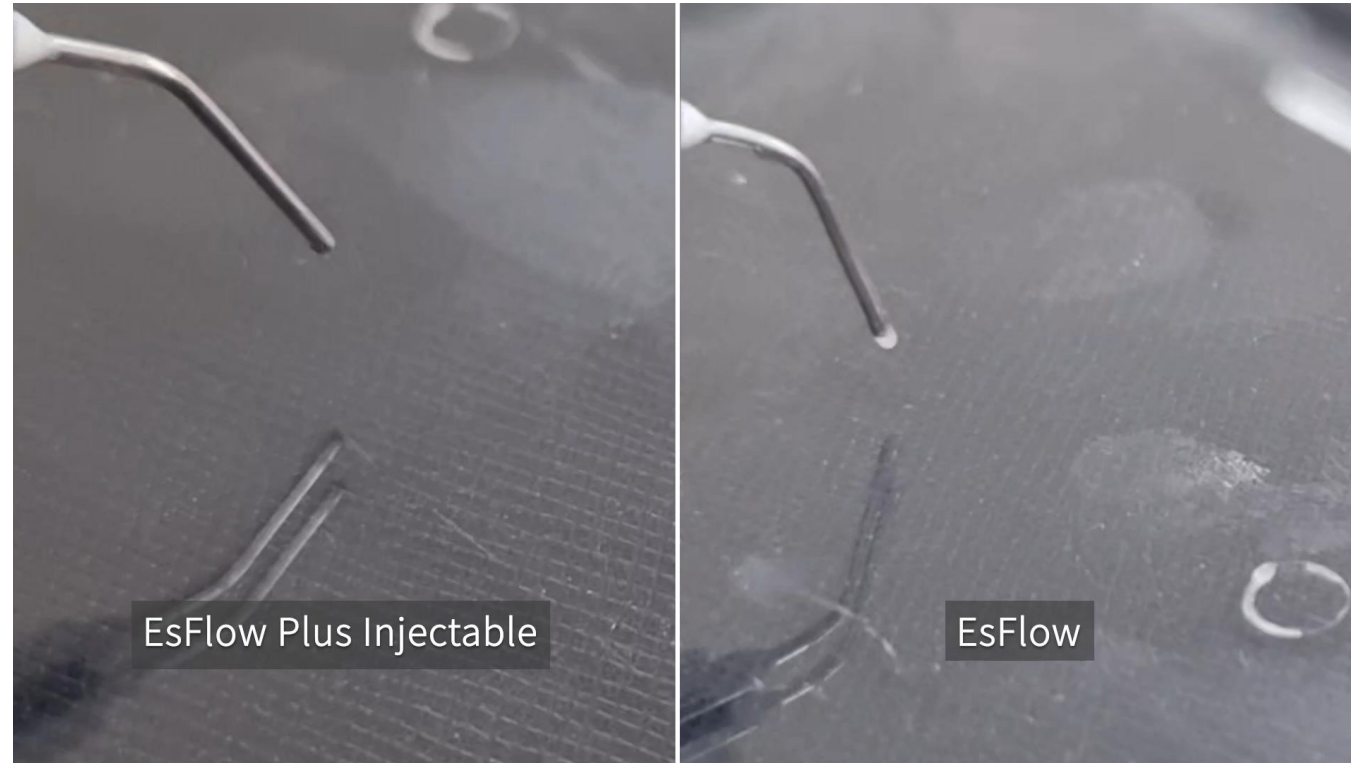
Ideal viscosity to easily separate the material from the tip
Shorter finishing steps without the need to polish extra composite

EsFlow Plus **Injectable**

Light-Cured Flowable Composite Resin



Zero residual syringe system



The 'Zero residual syringe system'-an enhanced syringe design minimizes the formation of bubbles and virtually eliminates any material overflow.

EsFlow Plus **Injectable**
Light-Cured Flowable Composite Resin



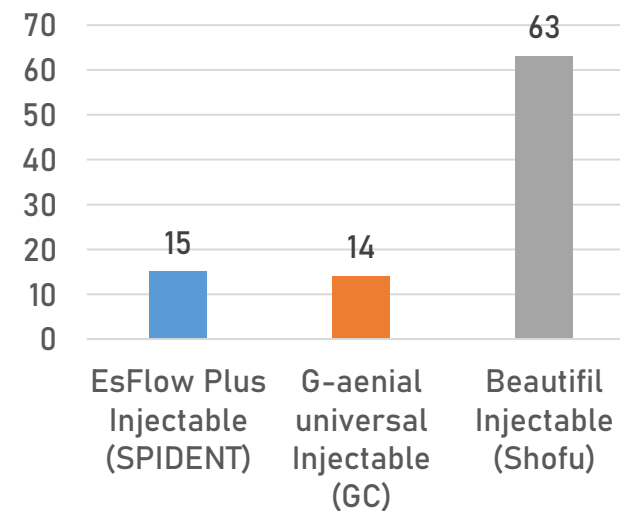
Easy extrusion



Specially designed syringe gives comfort during extrusion

Pentagonal plate and plunger make it easier to hold and inject.

Extrusion Power (N)

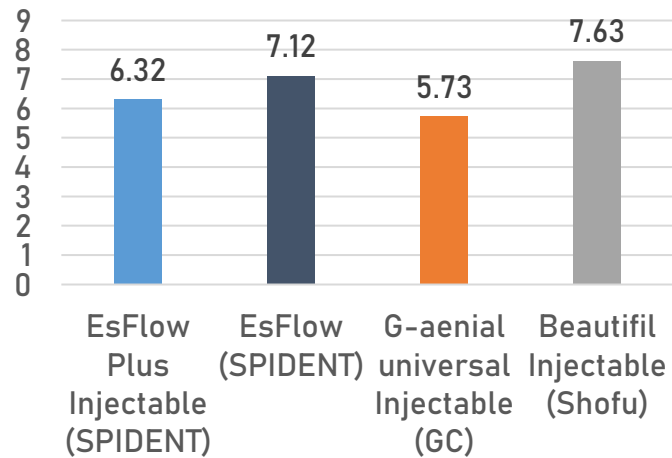


EsFlow Plus **Injectable**
Light-Cured Flowable Composite Resin

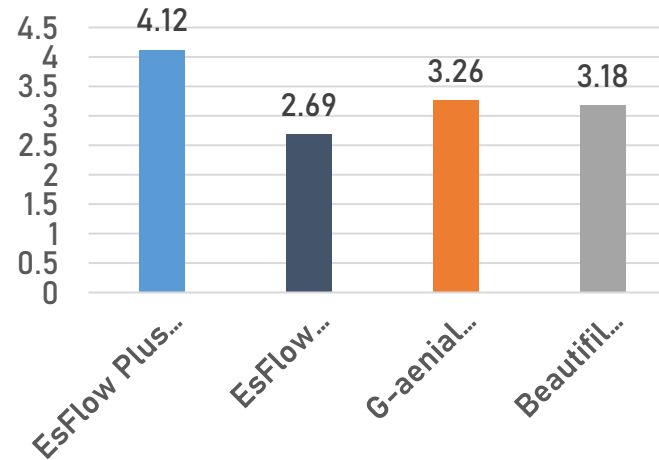


Physical Properties

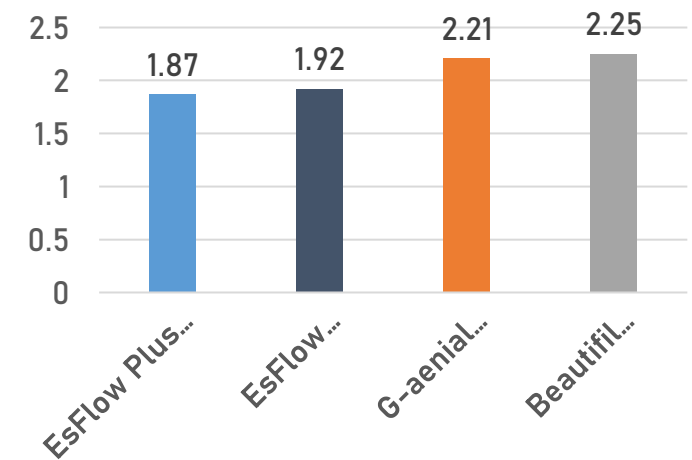
Flexural Modulus (GPa)



Curing Depth (mm)



Shrinkage (%)



*Source: SPIDENT R&D Center

EsFlow Plus Injectable

Light-Cured Flowable Composite Resin



Fluorescence properties of flowable resin

	EsFlow Plus Injectable (SPIDENT)	EsFlow (SPIDENT)	EsCom250 (SPIDENT)	Filtek Supreme Flowable (3M)	Filtek Z350 (3M)	G-aenial Universal Injectable (GC)	Beautiful Injectable (SHOFU)
Normal							
Night lighting							

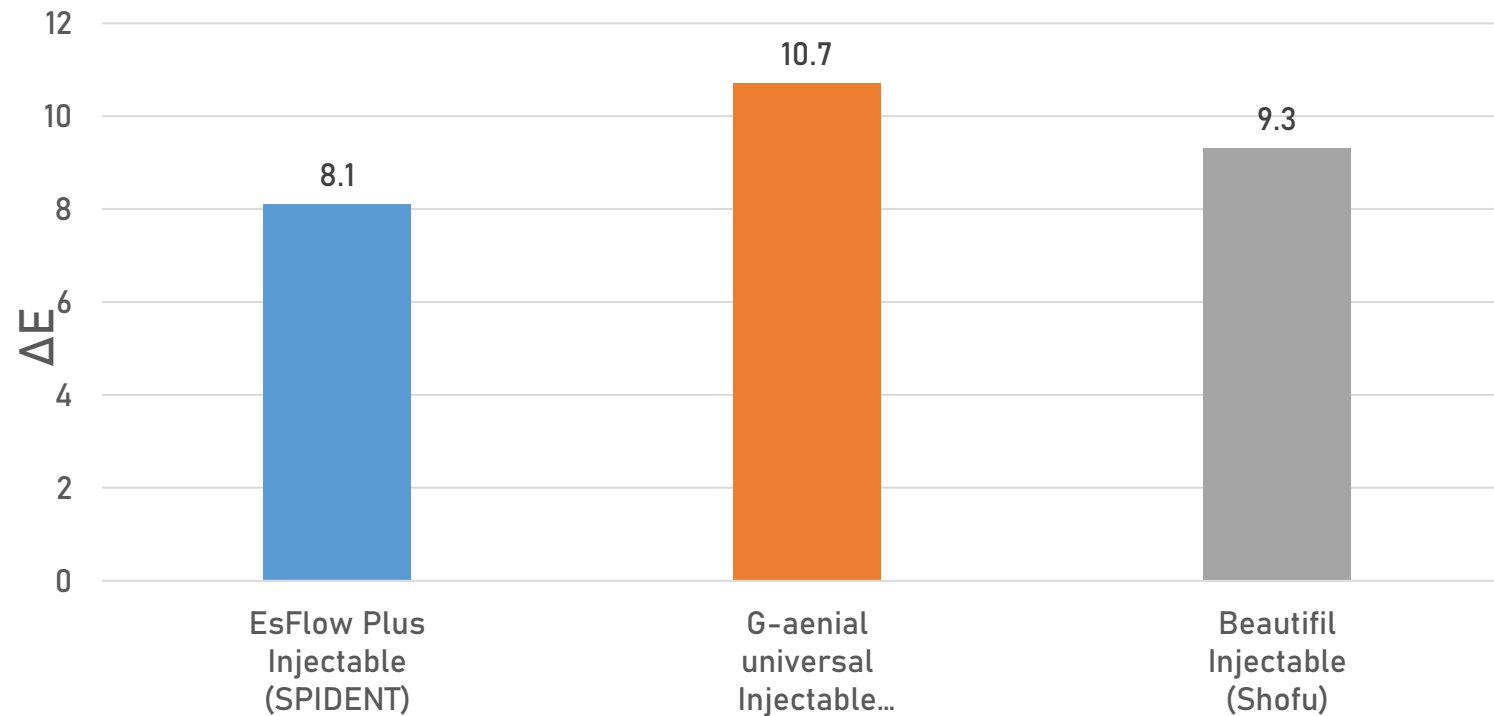
*Source: SPIDENT R&D Center

EsFlow Plus **Injectable**

Light-Cured Flowable Composite Resin

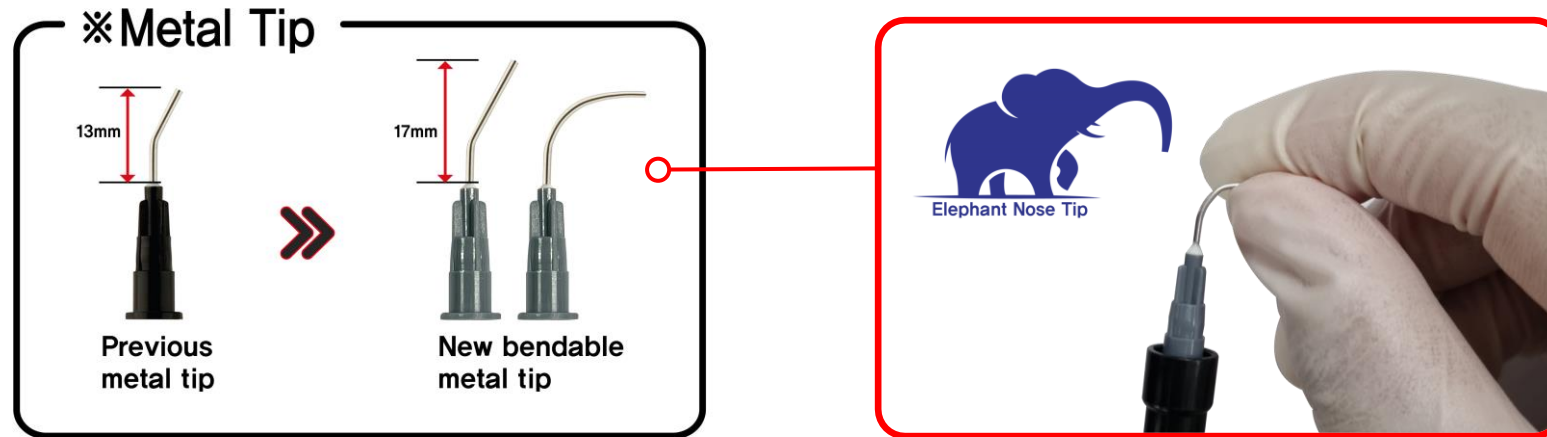


Comparison of color differences after curing

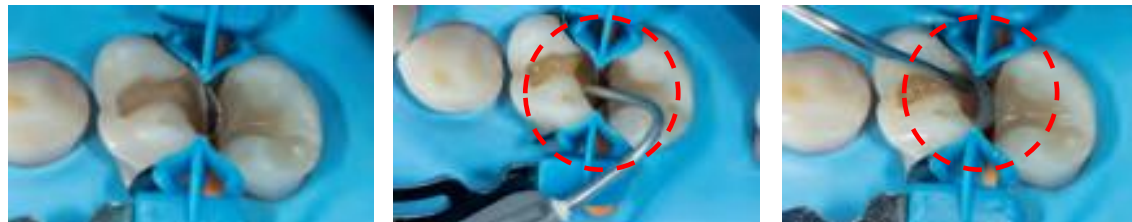


*Source: SPIDENT R&D Center

Bendable Metal Tip

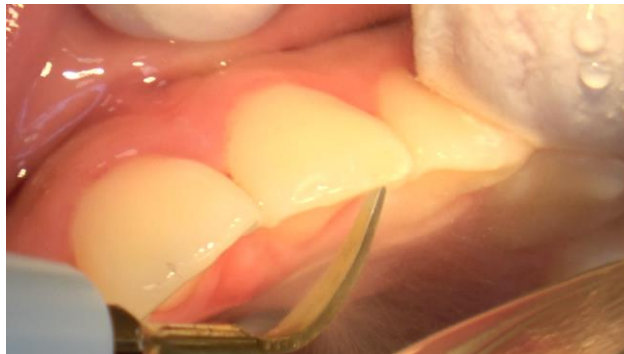


EsFlow Plus Injectable can reach
the distal surface of the posterior with new metal tip.



Clinical Case 1 – Anterior Restoration

Mirae Children Dental Clinic _ Hoon Kweon



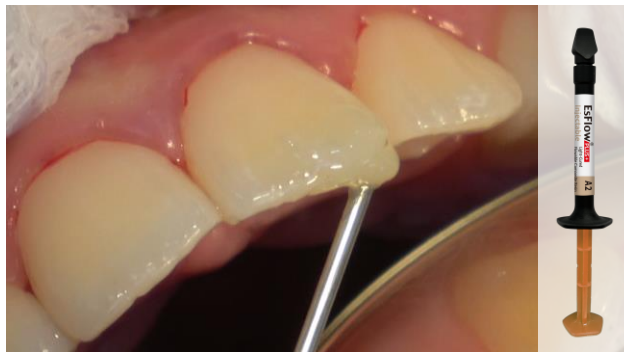
1. Prepare the tooth



2. Apply FineEtch etchant,
Rinse and dry



3. Apply K-Bond Universal adhesive,
Air blow for 10 seconds, Light cure for 10 seconds



4. Place EsFlow Plus Injectable,
Light cure for 10 seconds



5. Finish & Bite check



6. Glaze with K-Bond Universal adhesive,
Light cure for 10 seconds

Clinical Case 2 - Posterior Restoration

Mirae Children Dental Clinic _ Hoon Kweon



1. Prepare the tooth



2. Apply FineEtch etchant,
Rinse and dry



3. Apply K-Bond Universal adhesive,
Air blow for 10 seconds, Light cure for 10 seconds



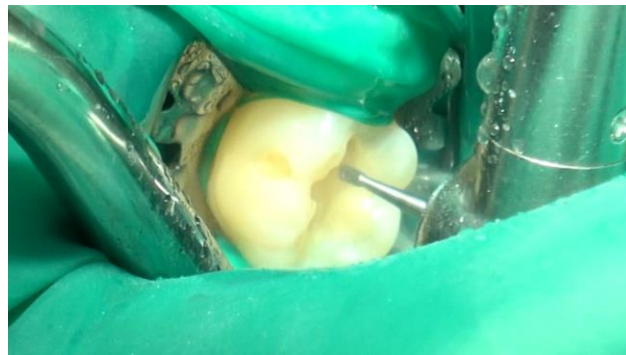
4. Place EsFlow Plus Injectable, Contour,
Light cure for 10 seconds



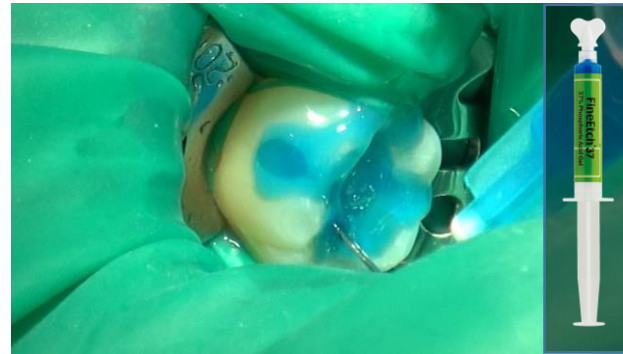
5. Finish & Bite check

Clinical Case 3 – Posterior Restoration

Parkseongwon Dental Clinic _ Seong won Park



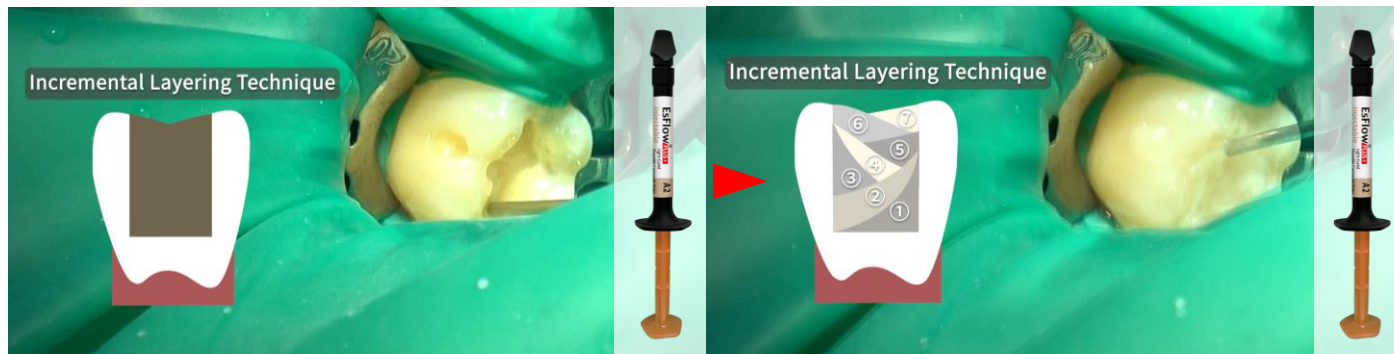
1. Prepare the tooth



2. Apply FineEtch etchant,
Rinse and dry



3. Apply K-Bond Universal adhesive,
Air blow for 10 seconds, Light cure for 10 seconds



4. Place EsFlow Plus Injectable by incremental technique to reduce polymerization shrinkage, Contour, Light cure for 10 seconds at each step



5. Finish & Bite check

EsFlow Plus Injectable
Light-Cured Flowable Composite Resin



Clinical Case 4

Medifore Dental Clinic _ Min soo Kim



After removing amalgam,
apply Esflow Plus Injectable

EsFlow Plus Injectable

Light-Cured Flowable Composite Resin

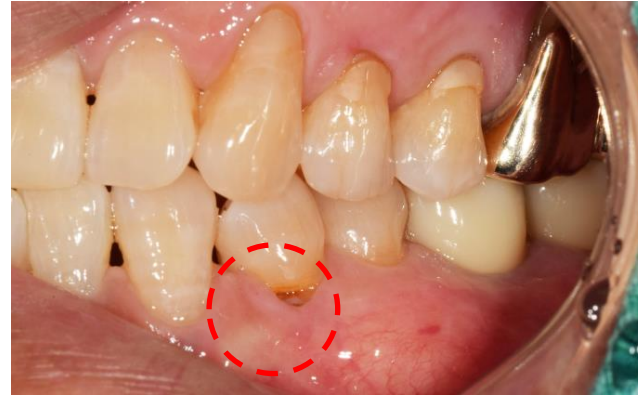


Clinical Case 5/6/7

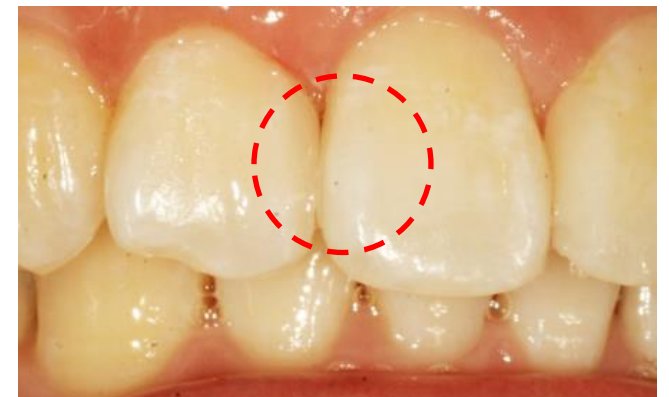
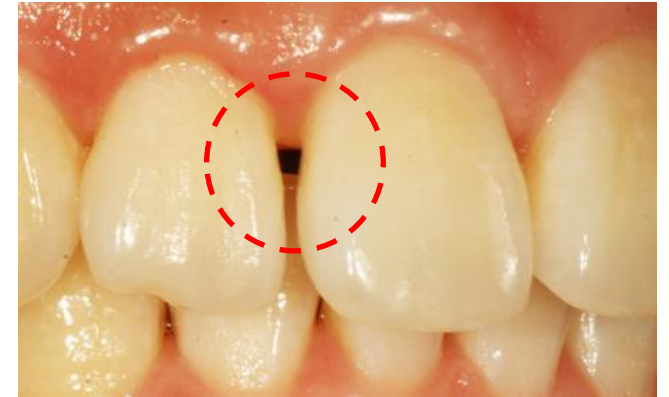
Yonsei Nature Dental Clinic _ Il sang Yoo



Posterior restoration
using Esflow Plus Injectable



Cervical restoration
using Esflow Plus Injectable



Diastema restoration
using Esflow Plus Injectable

Thank you for attention!

